



PCM

**£1,900 PCM**

**Bethnal Green Road**

London, E2 6DG

Located seconds from Brick Lane is this renovated top floor 1 double bedroom apartment.

The property features a brand new open plan kitchen to reception room, modern shower room and double bedroom.

The property is located seconds from an array of bars, restaurants and shops of Brick Lane, Redchurch Street and Shoreditch High Street.

Liverpool Street and Shoreditch High Street Stations are both located close by.

The property is only available for single occupants.

Available October

Unfurnished

12 month AST: no break clause

Council Tax: Band B

5 weeks deposit: £2192

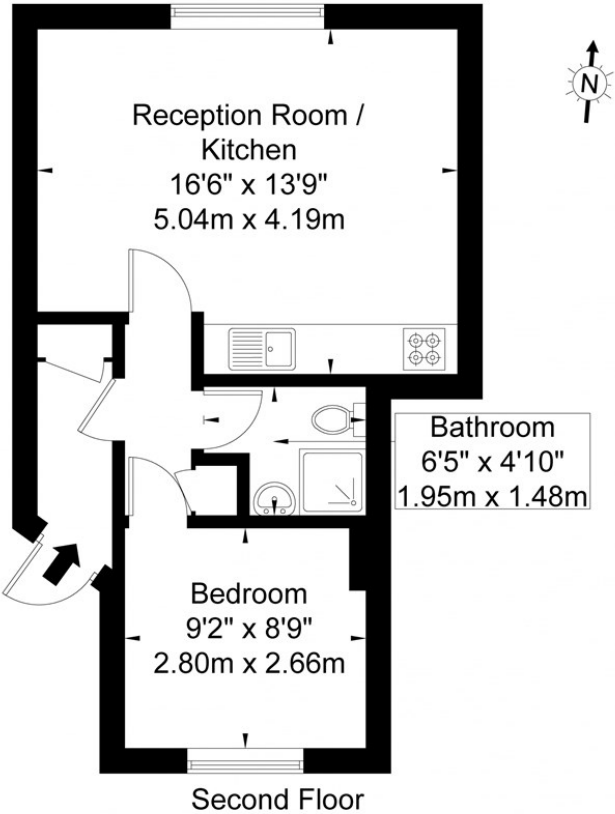






Bethnal Green Road, Shoreditch, E2 6DG

Approx. Gross Internal Area = 36.2 sq m / 389 sq ft



Ref Copyright **BLEU PLAN**  
Disclaimer : Floor plan measurements are approximate and are for illustrative purposes only  
While we do not doubt the floor plan accuracy and completeness, you or your advisors should  
conduct a careful, independent investigation of the property in respect of monetary valuation

Energy Efficiency Rating		
	Current	Potential
Very energy efficient - lower running costs		
(92 plus) A		
(81-91) B		
(69-80) C		
(55-68) D		
(39-54) E		
(21-38) F		
(1-20) G		
Not energy efficient - higher running costs		
England & Wales	EU Directive 2002/91/EC	

Agents Note: Whilst every care has been taken to prepare these particulars, they are for guidance purposes only. All measurements are approximate and are for general guidance purposes only and whilst every care has been taken to ensure their accuracy, they should not be relied upon and potential buyers/tenants are advised to recheck the measurements

OFFICE ADDRESS  
88 Cheshire Street  
London  
E2 6EH

OFFICE DETAILS  
0207 739 6969  
info@peachproperties.com  
www.peachproperties.com